



Traditional &
Contemporary

COMPOSITE DOOR COLLECTION

XtremeDoorTM





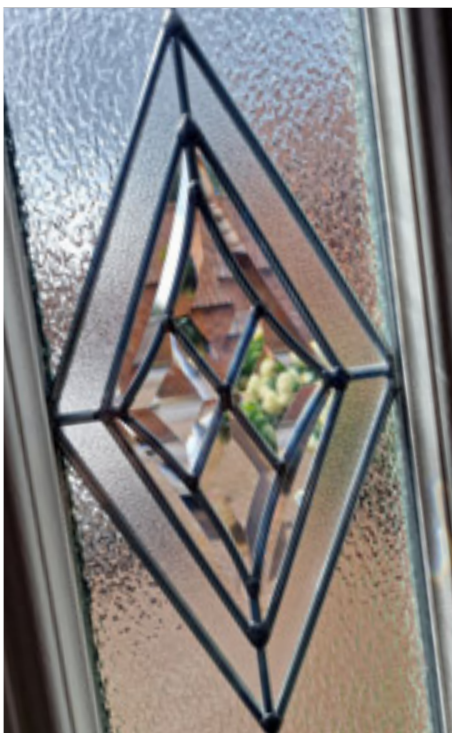
Why choose an **XtremeDoor** composite door?

~~Composite doors offer the look and feel of timber doors but with added security features and energy saving properties helping to keep those energy bills down.~~

They have a high-density foam core offering excellent strength and thermal performance, plus a durable Glass Reinforced Plastic (GRP) skin to protect from the elements.

GRP is the same material that is used to make wind turbines - demonstrating just how tough it really is!

And unlike timber, composite doors are incredibly low maintenance - an occasional wipe over with a damp cloth will restore it to its original finish.



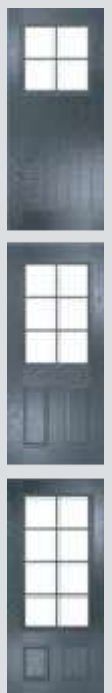
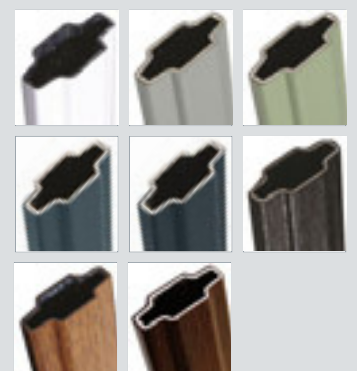
Key to Glazing Icons



Georgian Bar Options

~~Georgian bars are available in:~~
White, Agate, Chartwell Green, Slate, Anthracite, Black, Light Oak and Rosewood foil finishes.

All have white on the reverse except for Light Oak and Rosewood which is on both sides.





XtremeDoorTM

vs OtherDoor

How does XtremeDoor compare with industry

standard 4mm GRP Skin

Industry Standard is 2mm or less

- > Doc Q Compliant
- > High-impact Resistance
- > Low Maintenance and UV Stable

5 Hook Lock*

Industry Standard is 2 Hook

- > Increased Security
- > Anti - Snap, Pick, Drill & Bump Cylinders

Triple Seal Frame

Industry Standard is Dual Seal

- > 2 Brush - 1 Bubble
- > Tighter Seal - Can withstand Hurricane Force Winds
- > Weatherproof - Eliminating drafts
- > Low U-values - Keeps the heat in

25 Year Hardware Guarantee

Industry Standard is 12 Months

- > 25 Year Surface Finish Guarantee
- > Corrosion Proof
- > Salt Spray Tested

£3,000 Money-Back Guarantee



Scan the QR code to register your guarantee

We're so confident of our multi-point locking mechanism, we offer a £3,000 money-back guarantee in the unlikely event of a break-in where the lock is the point of entry.

* Long Bar Pull Handles and Cylinder Pulls come with a 3-point dead bolt auto-fire lock

Even the Police Struggle to Force Entry Through an **XtremeDoor?**



It takes time and specialist equipment to break through an XtremeDoor.

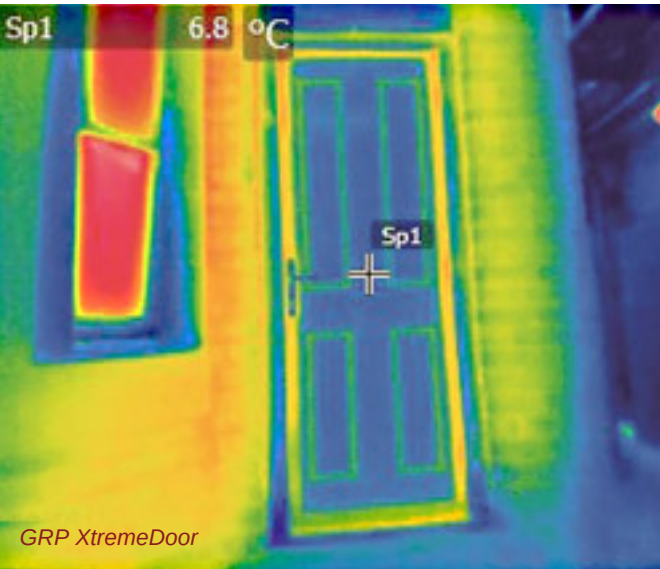
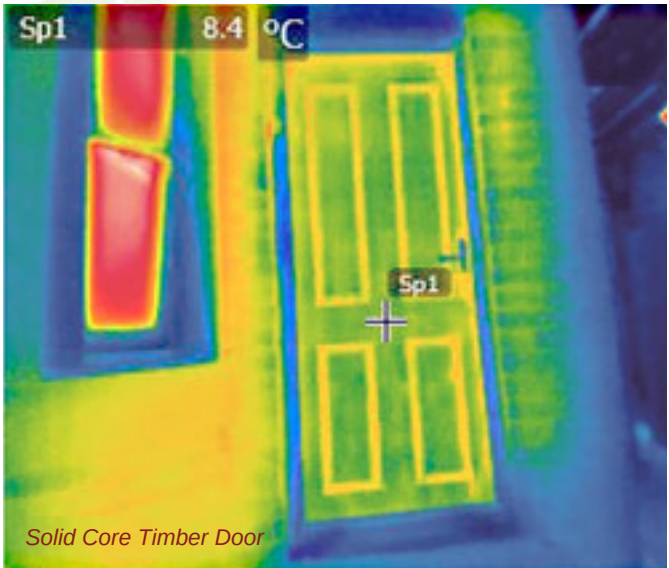
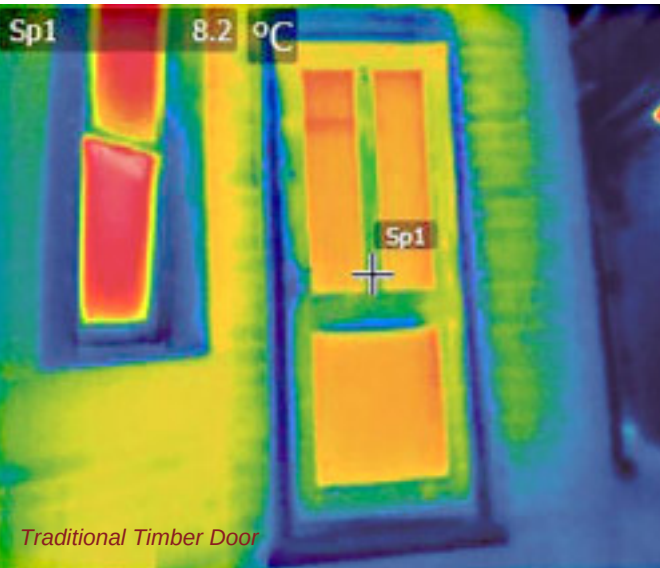
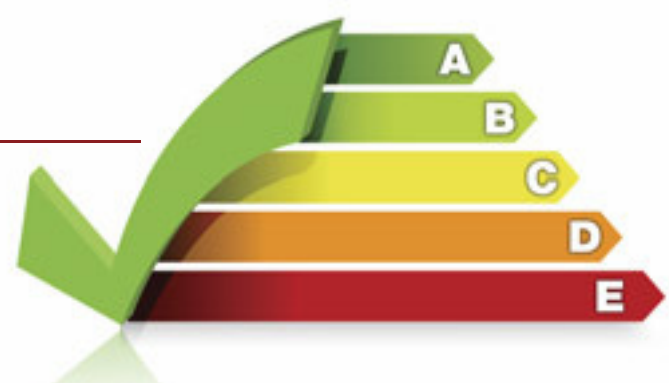
That's because an XtremeDoor has a rigid polymer subframe, a high density CUC-free polyurethane foam core, impact-resistant GRP skin, a five point locking system and an anti-snap, bump, pick and drill cylinder fitted with a guard for ultimate security.

Don't just take our word for it - the XtremeDoor has PAA24 2022 Enhanced Security accreditation and Secured by Design endorsement, so you can rest assured your home is safe.



Energy Efficient

Composite doors are more thermally efficient than either timber or PVC, and our doors are manufactured to the highest quality standards, making them more thermally efficient by design and helping to reduce those energy bills!



Unbeatable U-Values from 0.87W/m²*K






Edwardian Solid
Tudor Solid
Cottage Solid
Solid

* Based on solid doors. For glazed doors, please refer to their relevant pages.

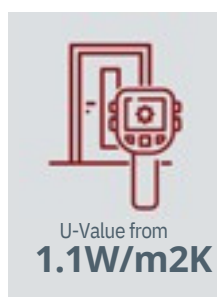
York

~~A classic design with two simple glass panels.~~

Suitable for any modern or traditional style of property.



Feature Door
Colour: Agate Grey
Glass: Titaniums I





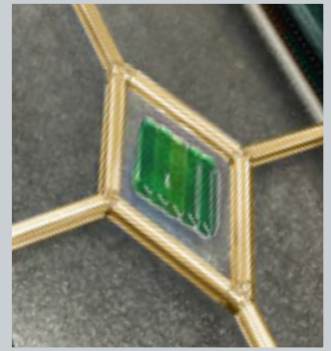
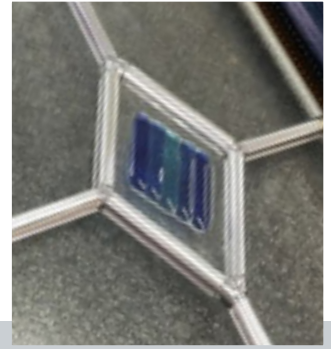
Colour: Chartwell Green
Glass: Bohemia n



Colour: Anthracite
Glass: Kara Brass s l



Colour: French Blue
Glass: Blue Fusion n



Our Fusion glass is available in either Blue or Green tile options and the choice of Zinc or Brass Camino



Left Door
Colour: Royal Magenta
Glass: Eternity l



Right Door
Colour: Duck Egg Blue
Glass: Toledo l

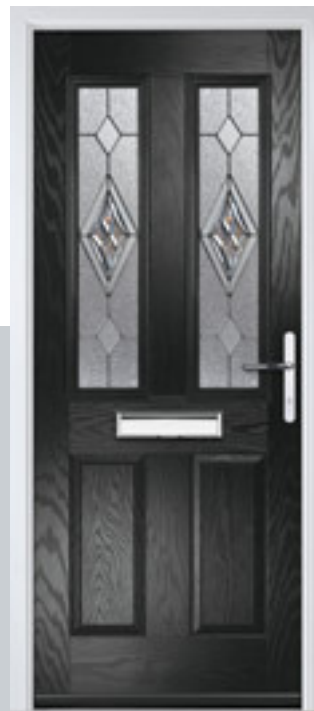


Glass: Olympic



Colour: Light Pink

Glass: Olympic_s |



Colour: Black

Glass: Knightsbridge_s |



Left Door

Colour: Cream

Glass: Etch Border_n

Right Door

Colour: Moondust

Glass: Elderton |

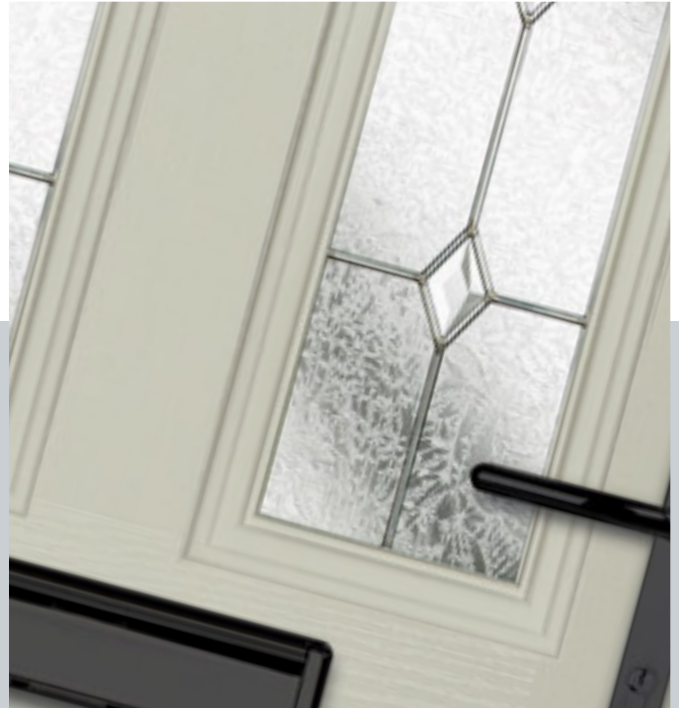




Colour: Green
Glass: Etch Splendour_n



Colour: Anthracite
Glass: Fleurn



Glass: Kara Zinc



Left Door
Colour: Blue Green
Glass: Oasis s l



Right Door
Colour: Pebble
Glass: Kara Zinc s l

Cambridge & Windsor

With its arched or raked panel tops, the Cambridge or Windsor will most certainly, add a touch of distinction to properties of any age.



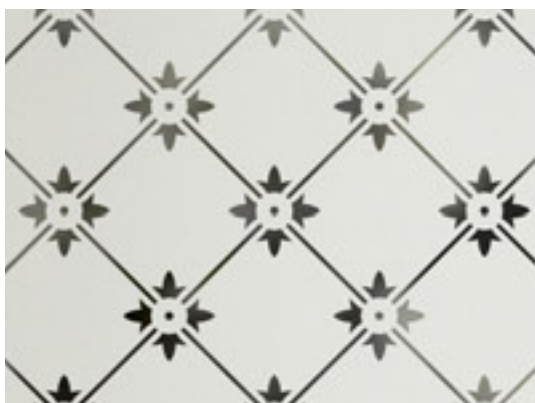
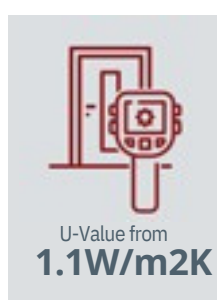
Cambridge



Windsor



Feature Door
Colour: Reed Green
Glass: Fleur





Colour: Black

Glass: Kara Brass_s |



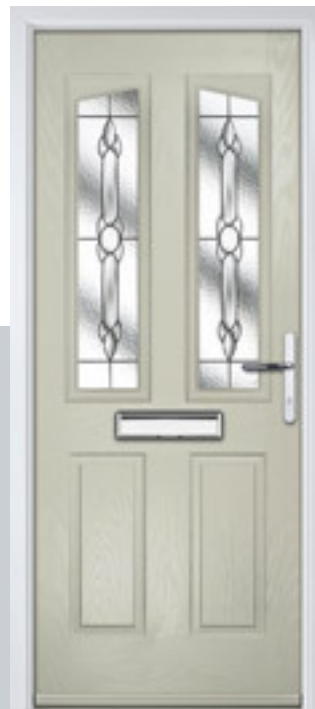
Colour: Duck Egg Blue

Glass: Elderton |



Colour: Slate

Glass: Knightsbridge_s |



Colour: Pebble

Glass: Bohemia_n



Can't see the colour you really want?



No problem!

All doors and frames can be sprayed in any Classic RAL* of your choice.

* Additional costs and lead times apply. Fluorescent and Metallic colours excluded.

Left Door

Colour: Agate

Glass: Olympic_s |

Right Door

Colour: Chartwell Green

Glass: Oasis_s |

Georgian

Featuring a distinctive semi-circular glazing panel, these stately door designs echo the classic architecture of the Regency period.



Georgian 1



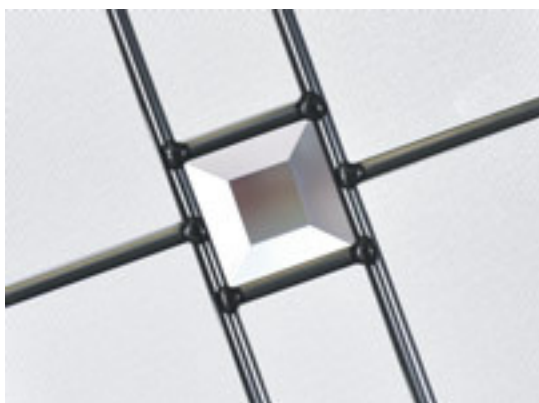
Georgian 1 Bar



Georgian 3

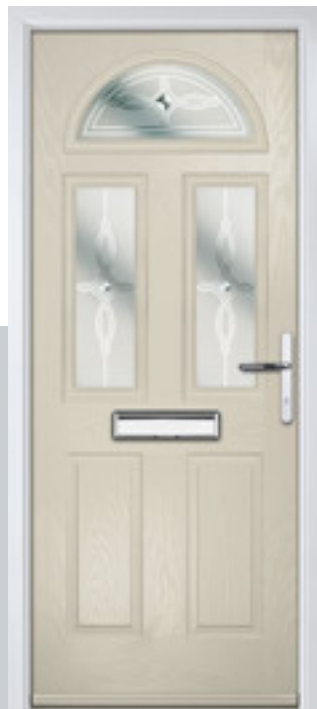


Feature Door
Colour: Slate
Glass: Olympics





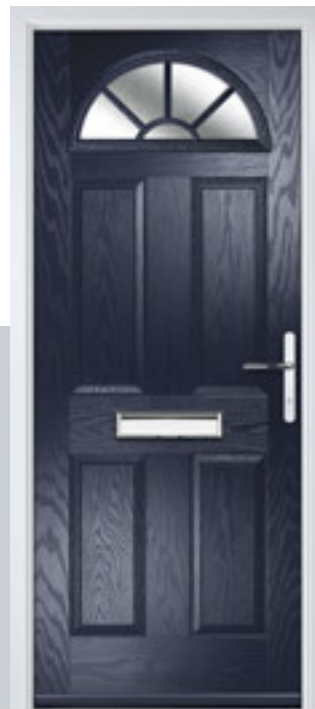
Colour: Green
Glass: Silveran_n



Colour: Cream
Glass: Gavalas_n



Colour: Moondust
Glass: Etch Border_n



Colour: Blue
Glass: Georgian Bar_n



**For our full
range of door
hardware &
colour finish
options...**
See Page 37



Left Door
Colour: Chartwell Green
Glass: Prism_l
(only available in Chartwell Green)



Right Door
Colour: Black
Glass: Diamond Classic_s_l

Edwardian

A stylish, traditional door offering varying degrees of privacy to street-front properties or those with shared access.



Edwardian Solid



Edwardian 2



Edwardian 4



Feature Door
Colour: Blue Green
Glass: Oasis I



U-Value from
1.0W/m2K





Colour: Duck Egg Blue
Glass: Silvaner ⁿ



Colour: Chartwell Green
Glass: Diamond Classic ^s |



Colour: Blue
Glass: Etch Border ⁿ



Colour: Moondust
Glass: Diamond Classic ^s |



**For our full
range of door
hardware &
colour finish
options...**
See Page 37



Left Door Colour:
Pebble Glass:
Olympic ^s |

Right Door
Colour:
Antarctic
Glass: Titanium ^s |



Victorian & Cottage Half

The Victorian features a large single glass panel to allow plenty of light into those spacious turn-of-the century hallways.



Victorian



Victorian Bar



Cottage Half



Feature Door
Colour: Duck Egg Blue
Glass: Elderton I





Colour: Royal Magenta
Glass: Rioja n



Colour: Agate
Glass: Titanium s l



Colour: Slate
Glass: Enclosed Venetian Blind



Colour: Cream
Glass: Etch Splendour n



Georgian Bar

Available in:

White, Chartwell Green, Agate, Slate, Anthracite, Black, Light Oak and Rosewood Foil Finishes.

Left Door

Colour: Anthracite
Glass: Georgian Bar n

Right Door

Colour: Chartwell Green
Glass: Etch Border n



Regal

With its American style, large glazed feature panel, the Regal door is proving to be just as popular here in the UK as it is 'over the pond'.

Extended
Lead Time



Regal

Regal Bar



U-Value from
1.2W/m2K

Feature Door
Colour: Black
Glass: Titanium

s l



Colour: Slate

Glass: Reflections_s l



Colour: Moondust

Glass: Bohemia n



Colour: Blue Green

Glass: Simplicity Zinc_s l



Colour: Agate

Glass: Georgian Bar_n

Tudor

Reminiscent of the door styles of the 1930's, the Tudor door is also available as a solid door option as well as a glazed version.

Extended
Lead Time



U-Value from
1.3W/m2K

Feature Door

Colour: Anthracite

Glass: Simplicity Brass



Colour: Chartwell Green

Glass: Reflections



Colour: Light Oak

Glass: Oasis



Colour: Green

Glass: Havana



Colour: Agate

Glass: Etch Border

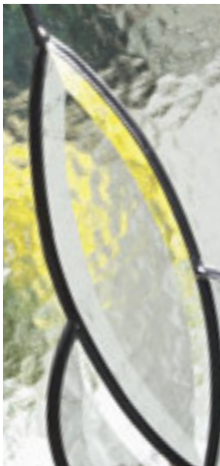
Devon

Another design which allows plenty of light into reception rooms or directly into a kitchen.



U-Value from
1.2W/m2K

Feature Door
Colour: Anthracite
Glass: Royal Sparkle_n



Colour: Agate
Glass: Mosel_n



Colour: Black
Glass: Mirambello_n



Colour: Duck Egg Blue
Glass: Spirit_n



Colour: Rosewood
Glass: Glazed_n

Georgian 2

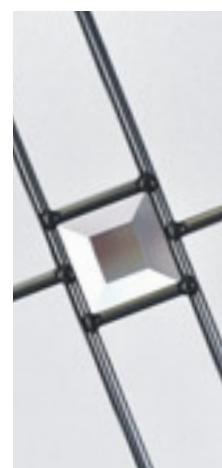
Affording a little more light, the two semi-circular panels create a modern distinctive style door.



Georgian 2



Georgian 2 Bar



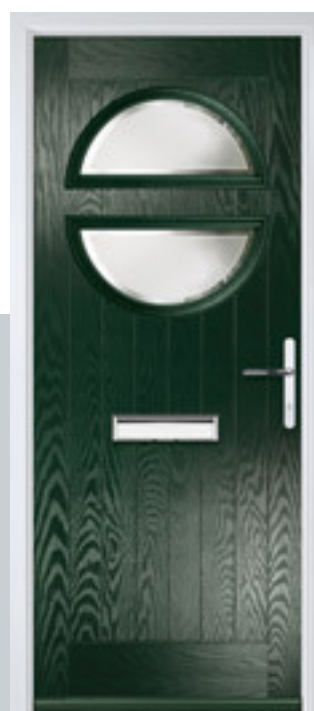
Feature Door
Colour: Blue Green
Glass: Olympic _S |



Colour: Moondust
Glass: Silvaner _n



Colour: Blue
Glass: Diamond Classic _S |



Colour: Green
Glass: Etch Border _n



Colour: Chartwell Green
Glass: Fretted Cassette _n

Cottage 1 & Diamond

Unlike other 'cottage' doors in the market, our cottage door has a unique 'offset-etched detailing' and comes in two glazing styles.



Cottage Solid



Cottage Diamond



Cottage 1



Feature Door
Colour: Pebble
Glass: Diamond Classic
s l

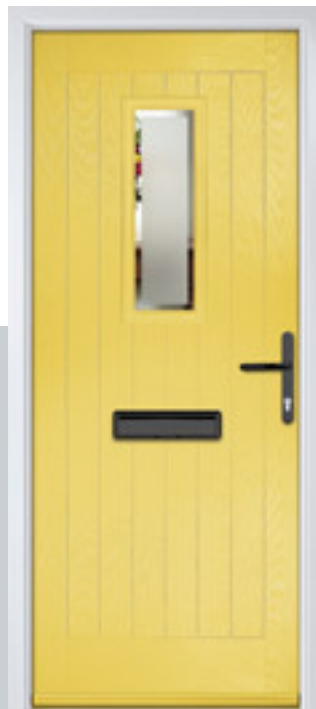




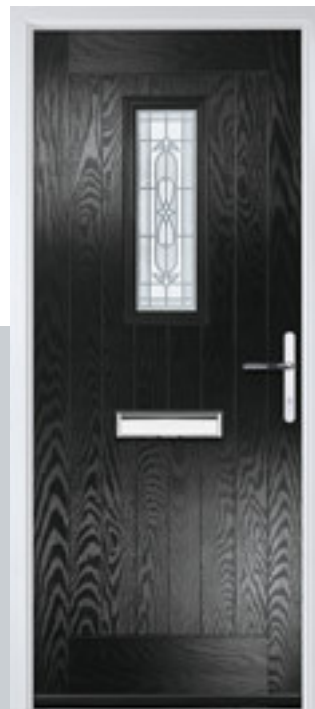
Colour: Chartwell Green
Glass: Titanium s l



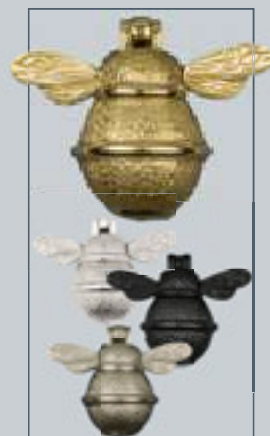
Colour: Blue Green
Glass: Olympic s l



Colour: Signal Yellow
Glass: Etch Border n



Colour: Black
Glass: Full Set s l



For our full
range of door
hardware &
colour finish
options...
See Page 37

Left Door Colour:
Duck Egg Glass:
Oasis s l

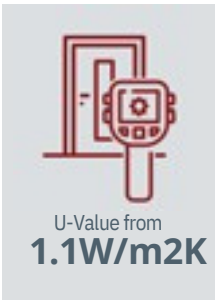
Right Door
Colour: Light
Pink Glass: Bullion l

Farmhouse Square

~~This design is a take on the classic cottage style door~~
and will suit those looking for a rural look.



Square Square Bar



Feature Door
Colour: Chartwell Green
Glass: Georgian Bar



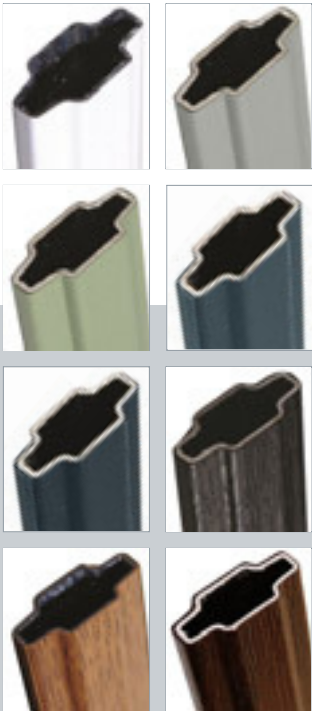
Colour: Reed Green
Glass: Glazed



Colour: Moondust
Glass: Satin



Colour: Slate
Glass: Georgian Bar




Available in: White, Chartwell Green, Agate, Slate, Anthracite, Black, Light Oak and Rosewood Foil Finishes.

Farmhouse 1

Farmhouse 1 is a simple design that is sure to evoke the countryside look in your property.





U-Value from
0.98W/m2K

Feature Door
Colour: Moondust
Glass: Silveran n



Colour: Pebble
Glass: Olympic_s l



Colour: Black
Glass: Etch Border_n



Colour: Duck Egg
Glass: Titanium_s l



Colour: Slate
Glass: Diamond Classic_s l

Cottage 4

The Cottage 4 is a very popular contemporary door design with the choice of lock, centred or hinge side glazing positions.

Glazed
Lock Side
as Standard



Right Option



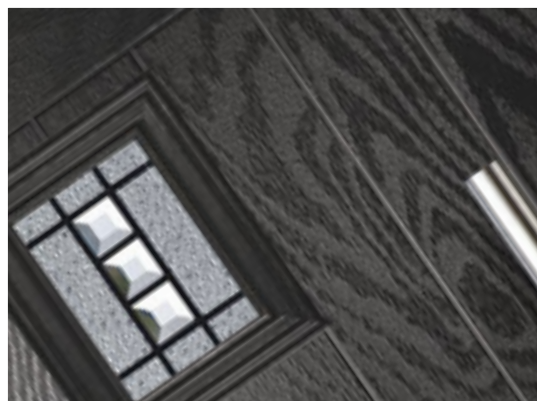
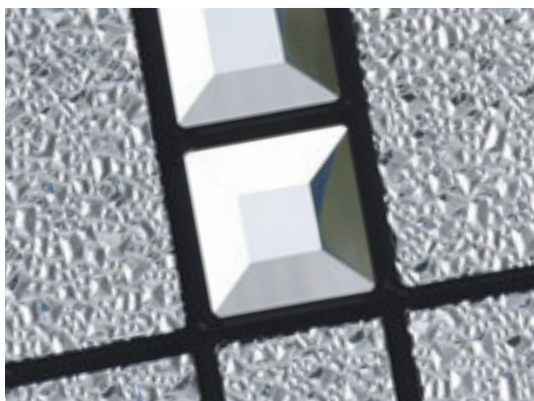
Centre Option



Left Option



Feature Door
Colour: Black Ash
Glass: Titanium I

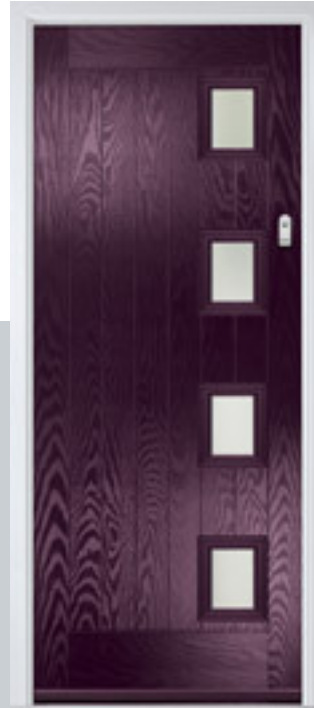




Colour: Slate
Glass: Diamond Classic_s l



Colour: Light Pink
Glass: Silver_n



Colour: Royal Magenta
Glass: Satin



Colour: Pebble
Glass: Glazed_n



Left Door
Colour: Agate
Glass: Olympic_s l



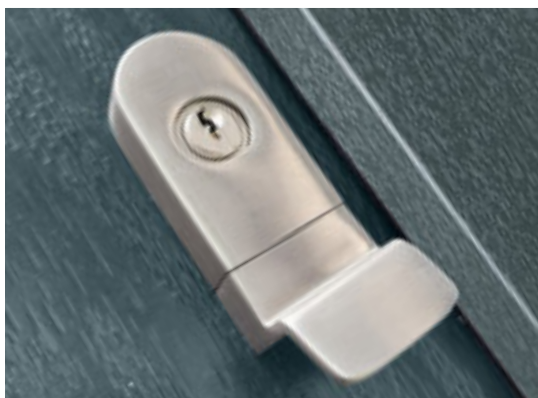
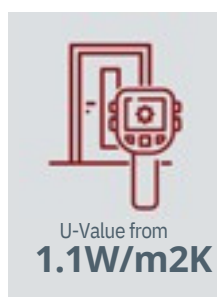
Right Door
Colour: Blue Green
Glass: Etch Border_n

Jacobean

The inline slim glazing detail on the Jacobean door is inspired by the contemporary European door look.



Feature Door
Colour: Slate
Glass: Satin





Colour: Agate
Glass: Silverane_n



Colour: Royal Magenta
Glass: Titanium_{s l}



Colour: Chartwell Green
Glass: Diamond Classic_{s l}



Colour: Blue Green
Glass: Glazed_n



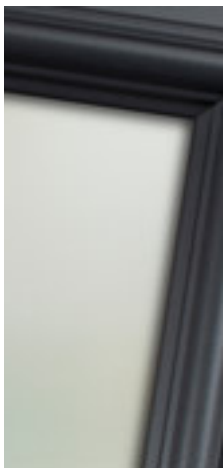
Left Door
Colour: Moondust
Glass: Olympic_{s l}




Right Door
Colour: Anthracite
Glass: Etch Border_n

Napoli

A bold and contemporary design with a subtle Art Deco influence.



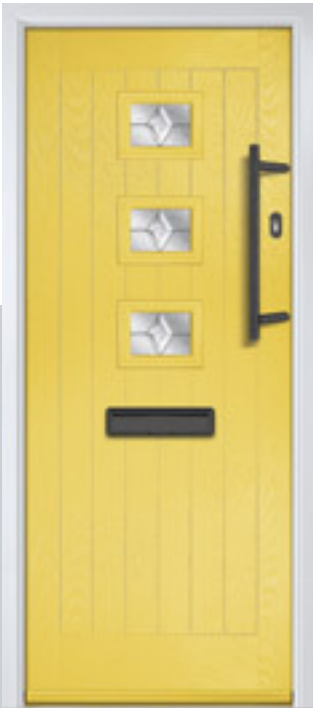


U-Value from
1.0W/m2K

Feature Door
Colour: Anthracite
Glass: Satin



Colour: Duck Egg
Glass: Olympic_s |



Colour: Signal Yellow
Glass: Diamond Classic_s |



Colour: Slate
Glass: Titanium_s |



Colour: Cream
Glass: Etch Border_n

Stuart

A simple design with a single offset or central glazed panel providing a contemporary and modern statement.



Right Option




Centre Option



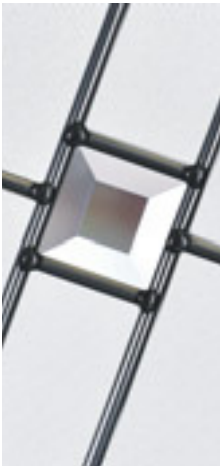
Left Option





U-Value from
1.1W/m2K

Feature Door
Colour: Moondust
Glass: Olympic



Colour: Black
Glass: Etch Border



Colour: Pebble
Glass: Titanium



Colour: Blue Green
Glass: Satin



Colour: Chartwell Green
Glass: Glazed

Verona

With its contemporary linear etched detailing, Verona is a stunning door available with glazing detail or as a solid door.

Extended
Lead Time



Solid



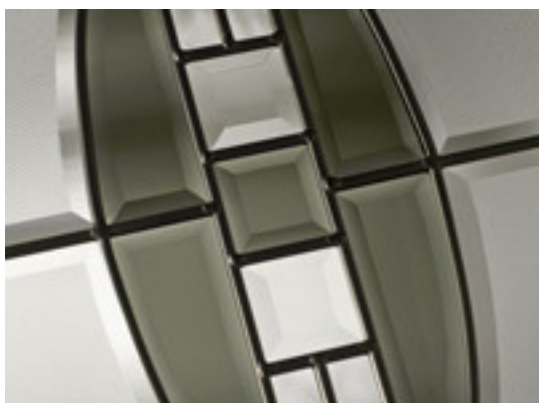
Left Option



Right Option



Feature Door
Colour: Black Ash
Glass: Reflections





Colour: Slate
Glass: Olympic_S |



Colour: Duck Egg Blue
Glass: Satin



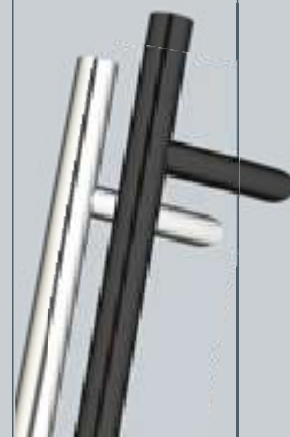
Colour: Royal Magenta
Glass: Glazed_n



Colour: Anthracite



**Modern
pull bars in
a choice of
sizes and
finishes...**
See Page 37



Left Door
Colour: Moondust
Glass: Titanium_S |

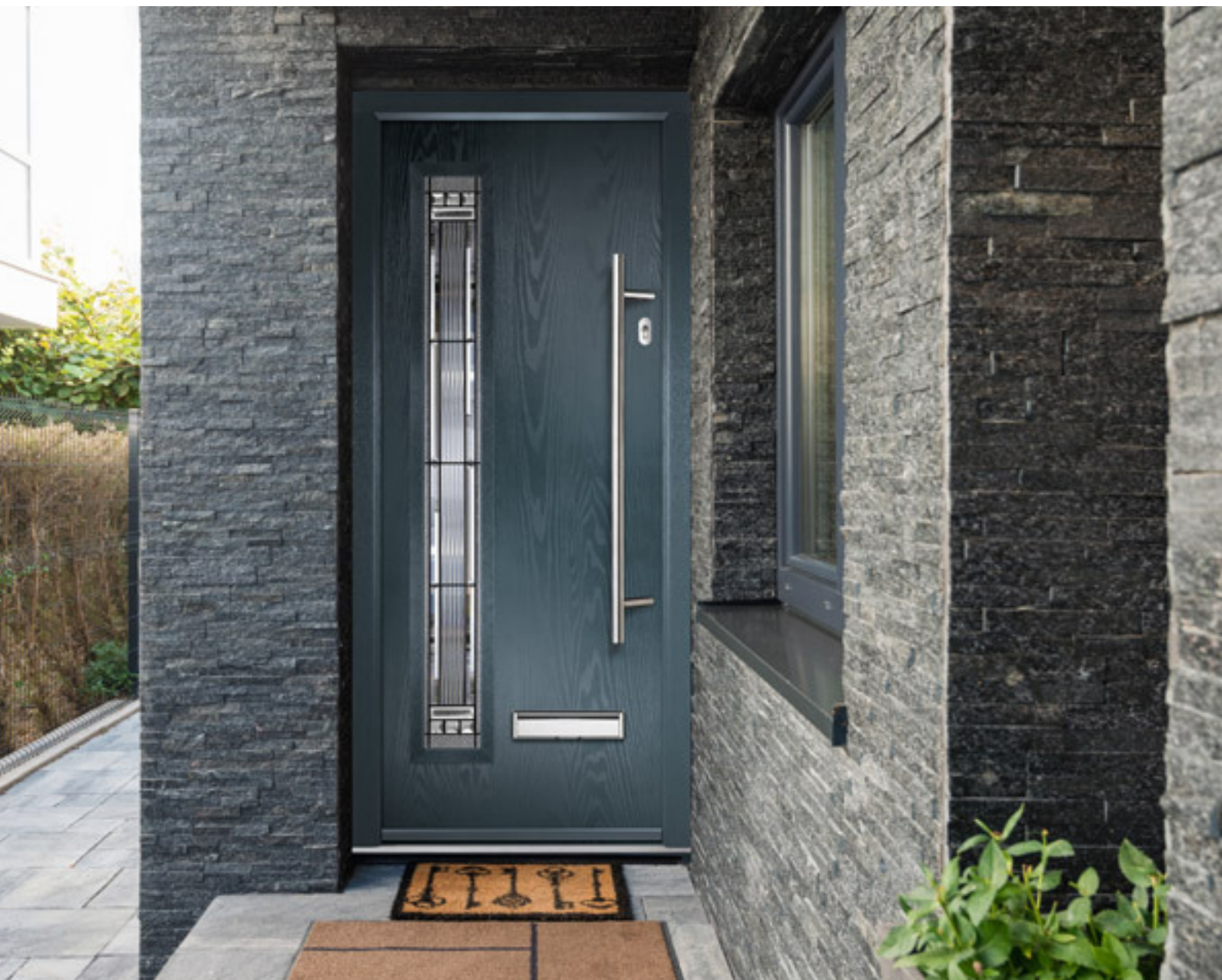
Right Door
Colour: Agate
Glass: Etch Border_n



Oslo

With a flush grained surface finish and flat glazing cassette, the Oslo has a clean modern style.

Extended
Lead Time



Feature Door
Colour: Slate
Glass: Titanium





Colour: Anthracite
Glass: Olympic_s l



Colour: Chartwell Green
Glass: Titanium_s l



Colour: Black Ash
Glass: Satin_n



Colour: Moondust
Glass: Glazed_n



Left Door
Colour: Agate
Glass: Etch Border_n



Right Door
Colour: Pebble
Glass: Reflections_s l

Door Furniture

Add the finishing touches to your XtremeDoor with our wide range of door furniture including: letterplates and spyholes, as well as decorative urns/slimline urns. There's also a selection of finishes to choose from to enhance the colour and style of your XtremeDoor.



Care for
your Bee



Depending on the door style and knocker style, some items are supplied loose.

Door Furniture

Premium Letterplates



Standard Letterplates

Available in: Chrome, Gold, Black and White



Traditional Range



Spyholes

Spy viewers are supplied loose when a long bar handle is chosen that will block the view



Hinges



Door Pulls



Long Pull Handles



Available in: 600mm, 1200mm and 1800mm

Black available in 600mm and 1200mm only

Cylinder Pulls

Available in: Chrome, Gold, Black & Satin Silver



Escutcheons

Available in: Satin Silver & Black



Coloured Drip Bars

Available in: Anthracite Grey, Black, Blue, Chartwell Green, Cream, Duck Egg Blue, French Blue, Green, Moondust, Red, Royal Magenta and Slate

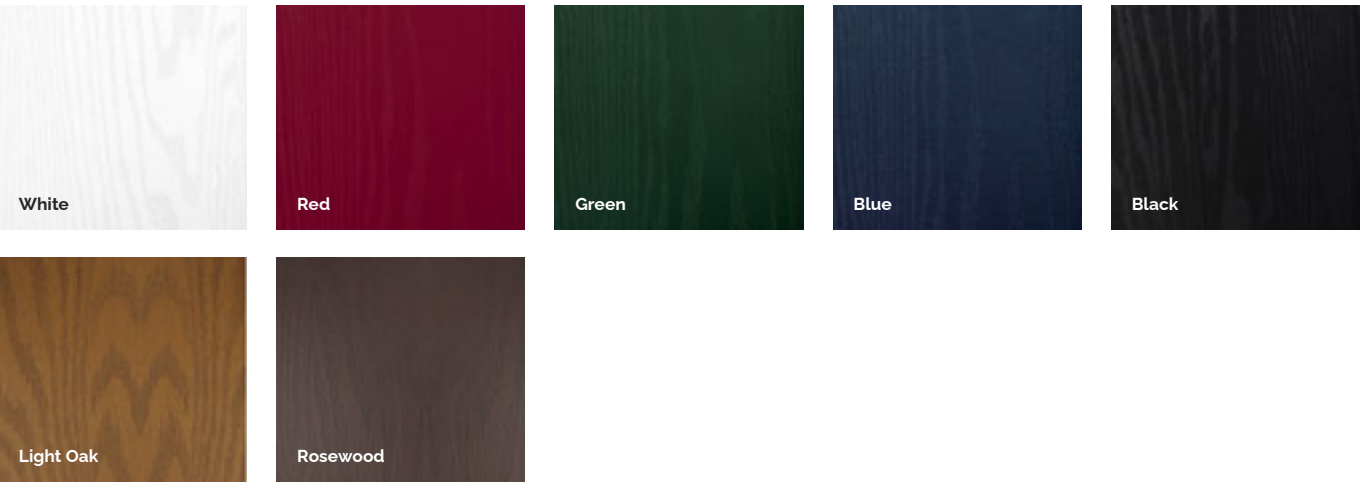


Door Colour Options

~~Doors are supplied with white internal colours as standard, however coloured both sides is available on request.~~

RAL numbers are for reference only. Different materials will give different shade variations when painted with the same RAL. Foiled frames and door slabs may appear slightly different due to the nature of the materials and light reflecting from them.

Standard Colours



Premium Colours



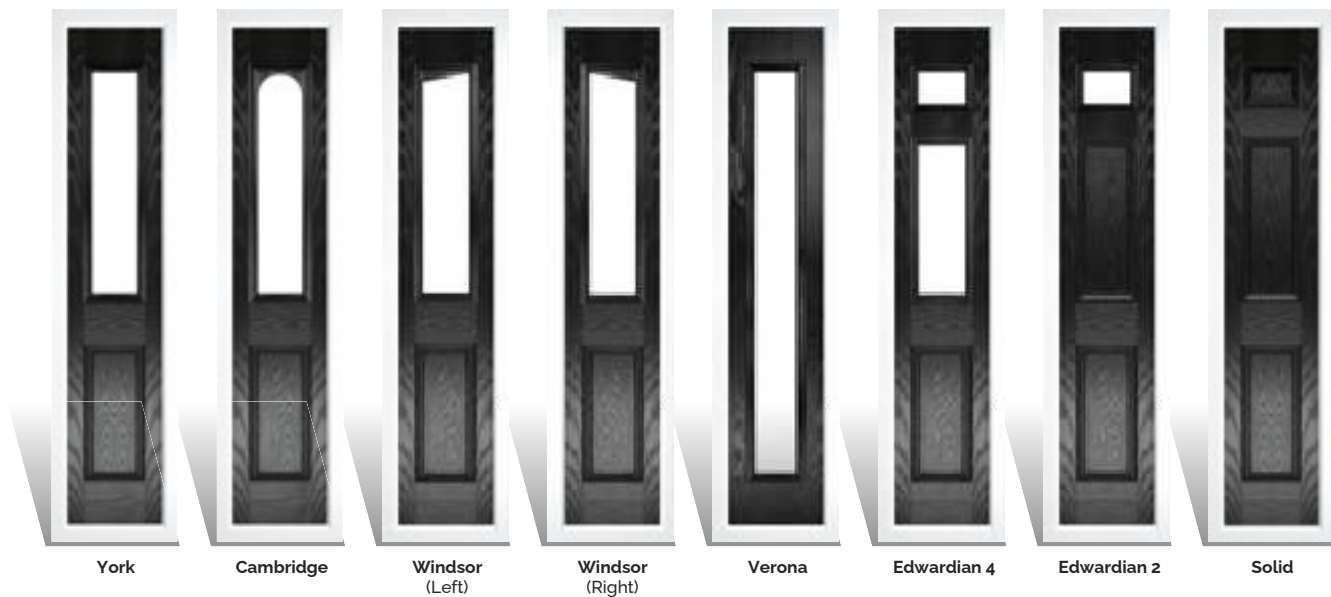
Can't see the colour you really want?
No problem! All doors and frames can be sprayed in any Classic RAL* of your choice.

* Additional costs and lead times apply. Fluorescent and Metallic colours excluded.

Rosewood, Light Oak and Premium Colours have a colour guarantee of 5 years.

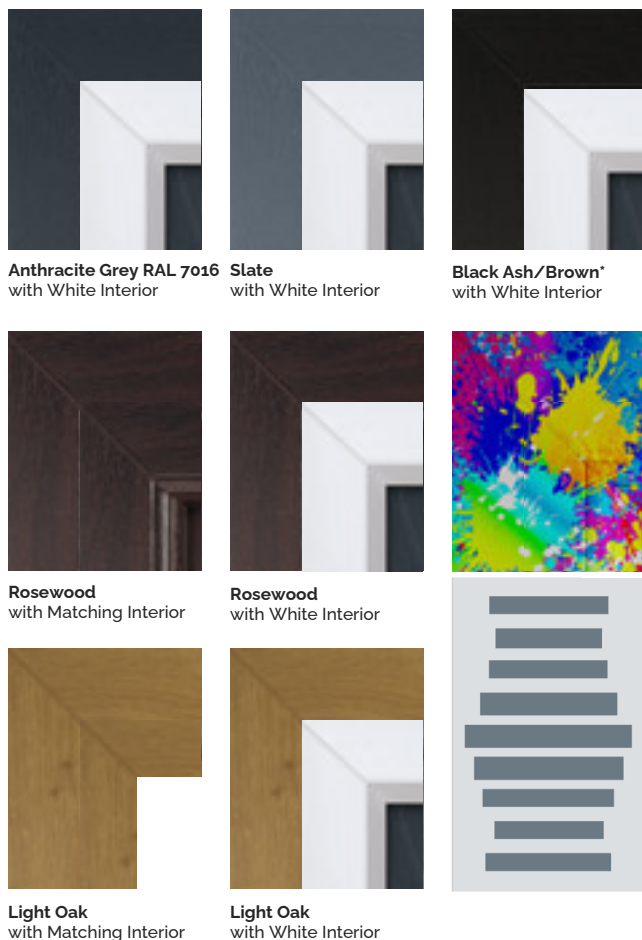
Composite Sidelight Options

For homes with larger openings, we offer a range of sidelight options to complement your door.



Colour Foiled Frames

Frames can be supplied coloured both sides on request.
Frames can also be sprayed to any RAL number on request.



* The foiled Black Ash/Brown frame may appear lighter than the black door in direct sunlight

Textured Glass Options

There are lots of textured glass options to choose from, helping you maintain privacy in your home.



* Glass names are the trademark of Pilkington plc. Images are copyright of Pilkington plc. and reproduced by courtesy.



844 Romford Rd, Manor,Park, E12 5JP
101 Wantz Rd, Dagenham, RM10 8PS

www.ddgwindows.co.uk



Design your perfect XtremeDoor online

www.xtremedoor.co.uk

XtremeDoor™



Upload your XtremeDoor
for us to share



Doors are supplied with white internal colour as standard, however coloured both sides is available on request.
RAL numbers are for reference only. Different materials will give different shade variations when painted with the same RAL.
Foiled frames and door slabs may appear slightly different due to the nature of the materials and light reflecting from them.